

Studio 3

Features



STUDIO AREA	13.1 x 9.2 m => 120 m ² column-free plus adjacent rooms combinable with Studio 1 and/or Studio 2
CEILING HEIGHT	5 m
POWER SUPPLY	2 x R32A, more on request
STUDIO-EQUIPMENT	Optical fiber line with up to 0.5 GBit/s (download: 500 MBit/s, upload: 100 MBit/s) Highspeed Wi-Fi Studio desk with power supply 5 poly boards black/white Sound system with iPad station Terrace with view of the river Spree
EQUIPMENT	Rent with new Profoto equipment and a wide range of tripods and grip gear
MAKE-UP & STYLING	1 make-up place on wheels illuminated 2 rollable clothes racks incl. 20 hangers 1 steamer 1 iron/ironing board
DINING AREA	up to 8 persons
KITCHEN	Nespresso machine with milk frother Fridge w/beverages (filled, billing per bottle)
ADDITIONAL	Cubes, movable walls, cardboard backdrops, tripods
SAFETY	The entire studio complex is alarm-secured, safe for camera and equipment.

Studio 3

Studio

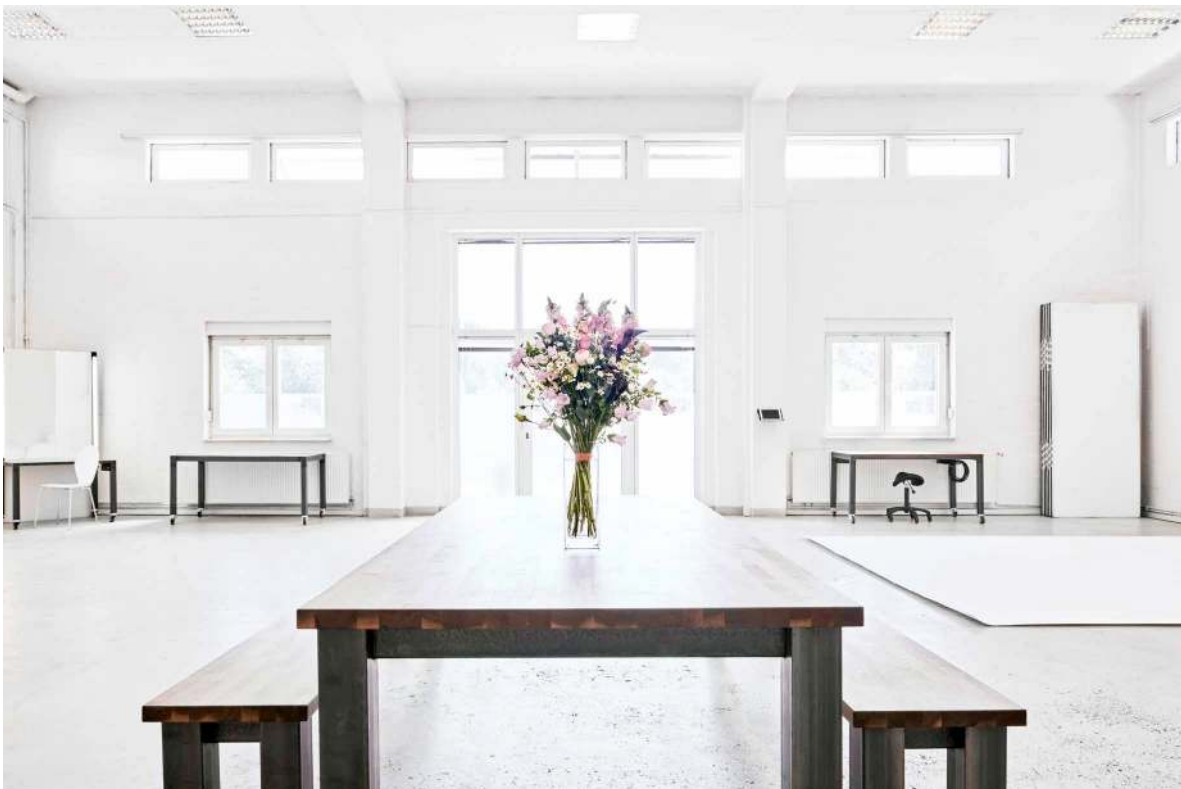


Studio 3

Studio



Studio 3
Studio



Studio 3

Ground plan

