

Studio 1

Features



STUDIO AREA	400 m ² of column-free studio space with additional 150 m ² of side rooms, 4 m high loft-windows with electric blinds that can be darkened completely, combinable with Studio 2 and 3
CEILING HEIGHT	5,5 m
CYCLORAMA	9 m wide x 9 m deep x 5 m high
ENTRANCE STUDIO	Entrance on ground level, accessible by car (passage maximum height: 2.7 m, width: 3.2 m)
POWER SUPPLY	4 x R32A, 1 x R63A, various European standard sockets (Schuko), 4 x mains cable extension and Schuko distributor
STUDIO - EQUIPMENT	Optical fibre cable with up to 0.5 GBit/s (download 500 MBit/s, upload 100 MBit/s) Hi-Speed WiFi Radio controlled, movable Bacht ceiling panel, 5x9m Mobile work table with power supply fridge filled w/ beverages powerful high-end sound system incl. Bluetooth ping-pong table, 5 poly boards B/W
EQUIPMENT	Rent with new Profoto equipment and a wide range of tripods and grip gear
MAKE UP & STYLING	70 m ² 2 make-up places, 1 hair washing chair, 2 showers, 2 rollable clothes racks with 20 hangers 1 steamer and 1 iron/ironing board each
DINING AREA	Dining table and seating for around 16 people
KITCHEN	Fully equipped kitchen with stove and oven, coffee/espresso machine
LOUNGE	70 m ² separate lounge and production office, table for 8 people, sofa corner
ADDITIONAL	Loading ramp directly next to the cyclorama, additional ground-level loading/unloading possible free parking directly at the studio cubes, partitions, cardboard backdrops
SAFETY	The complete studio complex is alarm-secured, safe for camera and equipment

Studio 1
Studio



Studio 1
Studio



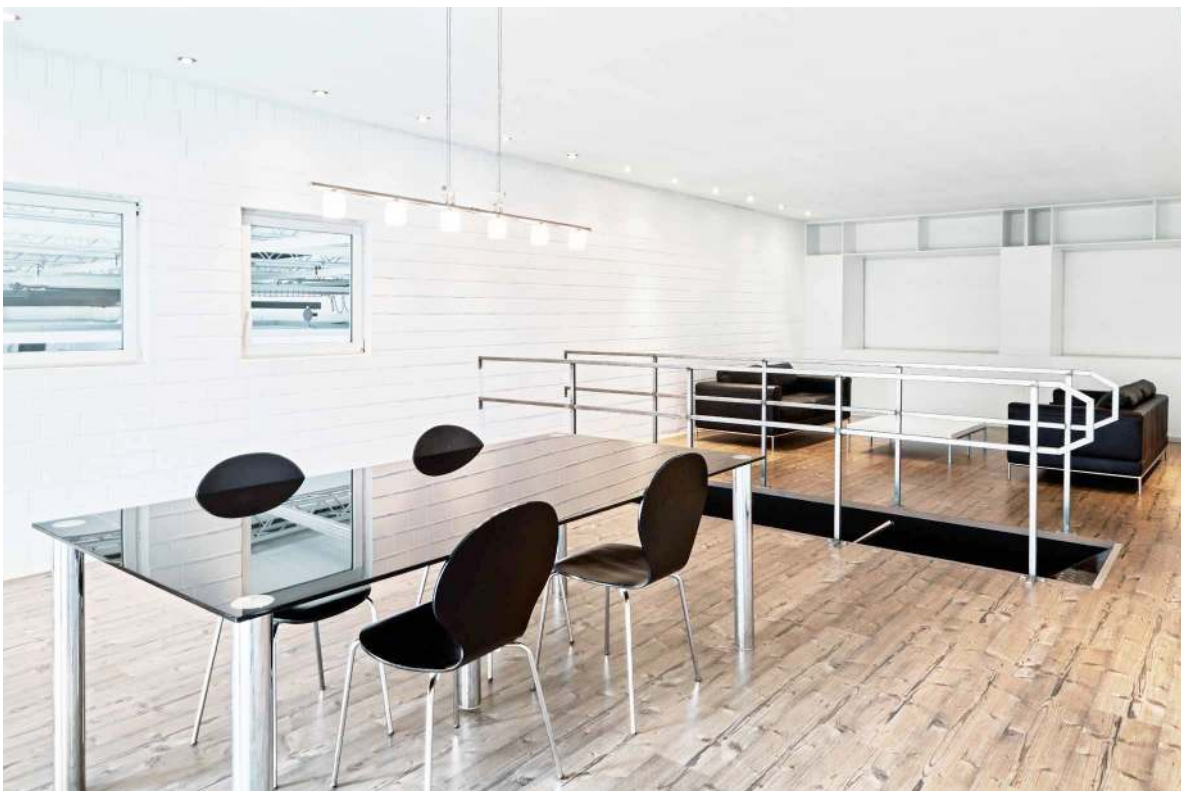
Studio 1
Studio



Studio 1
Styling



Studio 1
Styling, Lounge



Studio 1
Lounge



Studio 1

Kitchen



Studio 1

Depot

