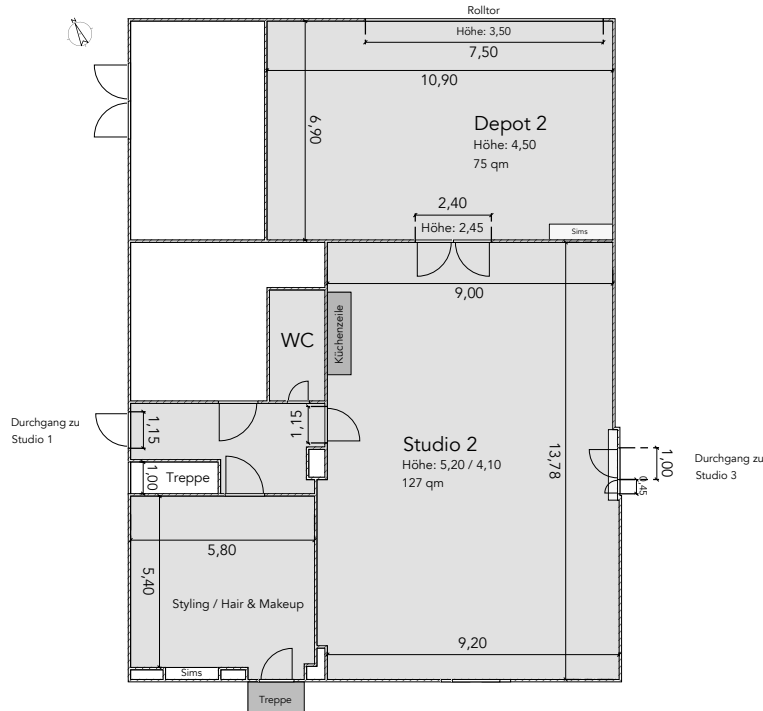


Studio 2

Features



STUDIO AREA	127 m ² column-free
CEILING HEIGHT	5 m
BACKGROUND	Brick, white brick walls, background suspension up to 4 m width
ACCESSABILITY	Entrance on ground level (maximum passage 2.5 m)
POWER SUPPLY	4 x R32A 4 x Schuko
STUDIO-EQUIPMENT	Optical fiber line with up to 0.5 GBit/s (download 500 MBit/s, upload 100 MBit/s), Hi-Speed WiFi Studio desk with power supply 5 poly boards b/w Sound system with iPad station Rent with new Profoto equipment and a wide range of tripods and grip gear
MAKE-UP & STYLING	Separate 30 m ² styling and make-up room 2 make-up places Make-up and styling area can be separated with a curtain 2 rollable clothes racks with 20 hangers Steamer and ironing board
DINING AREA	Dining table and seating for around 10 people
KITCHEN	Nespresso machine with milk frother Fridge w/beverages (filled, billing per bottle)
ADDITIONAL	Cubes, movable walls, photo background cardboard
SACETY	The entire studio complex is alarm-secured, safe for camera and equipment

Studio 2
Studio



Studio 2

Studio





Studio 2
Ground plan

